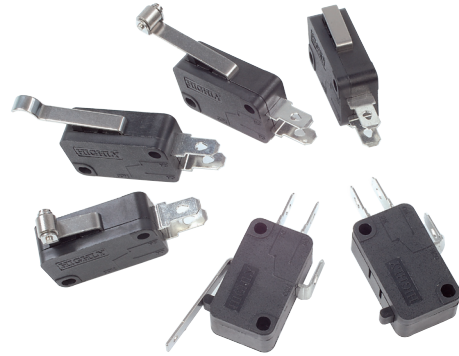


SNAP ACTION SWITCH

Features

- Reliability is excellent.
- It's has long life and more operating force can be applied such as lightly force.
- Good feeling and more levers are applied.



Applications

- Joystick , TV game , Time recorder , Air conditioner , Food processor , Juice maker , Alarm , Mixer , Shredder machine , etc.

Specifications

Item	Standard
Rating	10A 125V AC or 250V AC
Conforming to standards	UL 1054
Contact Resistance	15 mΩ max. (initial)
Dielectric Strength	Between terminals of same polarity AC 1000V (50/60Hz for 1minute)
	Between each terminal and non-current-carrying rind parts AC 2000V (50/60Hz for 1 minute)
Electrically Life	100,000 cycle
Mechanically Life	1,000,000 cycles

Product Selection

VS10N □□□
1 2 3

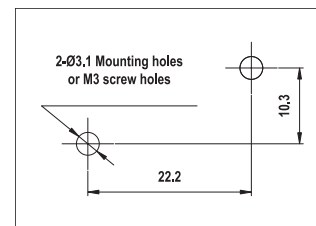
1. ACTUATOR TYPES

00: Pin plunger	04: Simulated roller lever
01: Short hinge lever	05: Short hinge roller lever
02: Hinge lever	06: Hinge roller lever
03: Long hinge lever	

2. CONTACT FORM & COMMON TERMINAL POSITION

Contact form	1: SPDT	2: SPST-NC	3: SPST-NO
Common terminal position	button 	button 	button

Mounting Holes



3. TERMINALS TYPE

Solder terminal (-A)	Screw terminal (-B)	Quick connect terminal 187 series (-C ₁)	Quick connect terminal 250 series (-C ₂)

SNAP ACTION SWITCH

Operating Characteristics

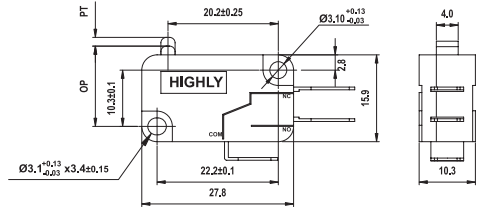
Unit: mm

Item Operating Characteristics Dimensions

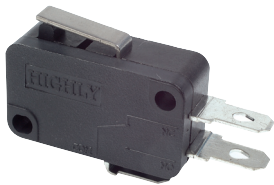
VS10N00



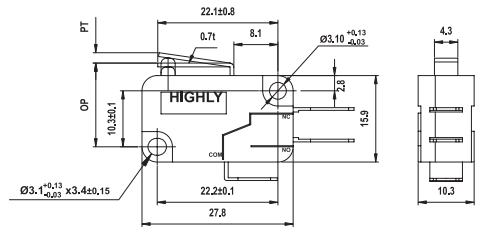
OF	max	230g
RF	min	56g
PT	max..	1.6 mm
OT	min.	0.8 mm
MD	max.	0.15~0.4 mm
OP		14.7 ± 0.4 mm



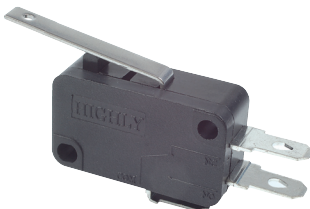
VS10N01



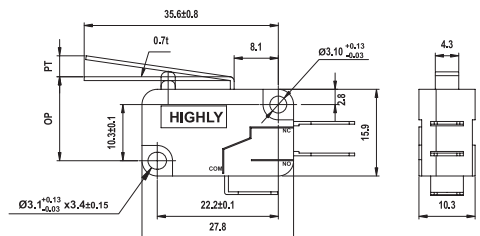
OF	max.	230g
RF	min.	45g
PT	max.	1.9 mm
OT	min.	0.6 mm
MD	max.	0.5 mm
OP		15.2 ± 0.5 mm



VS10N02



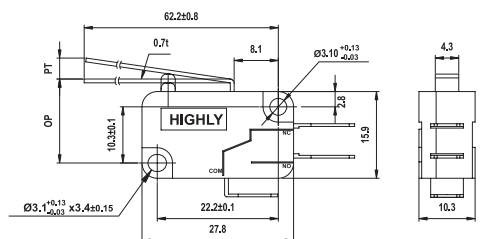
OF	max.	115g
RF	min.	14g
PT	max.	3.7 mm
OT	min.	1.6 mm
MD	max.	1.2 mm
OP		15.2 ± 1.2 mm



VS10N03



OF	max.	60g
RF	min.	7g
PT	max.	8.0 mm
OT	min.	3.0 mm
MD	max.	2.2 mm
OP		15.2 ± 2.6 mm



SNAP ACTION SWITCH

Operating Characteristics

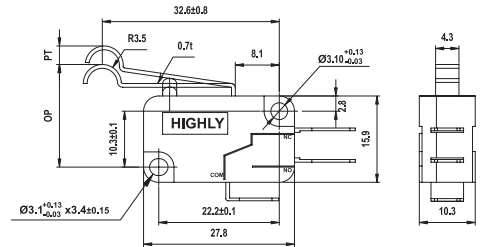
Unit: mm

Item Operating Characteristics Dimensions

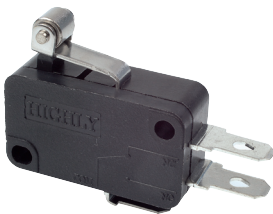
VS10N04



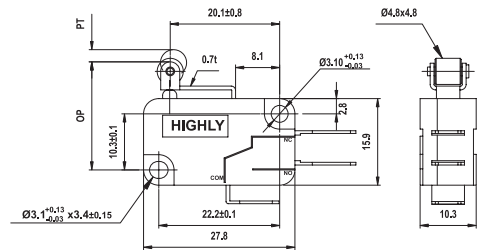
OF	max	115g
RF	min	14 mm
PT	max..	3.7 mm
OT	min.	1.6 mm
MD	max.	1.2 mm
OP		18.7 ± 1.2 mm



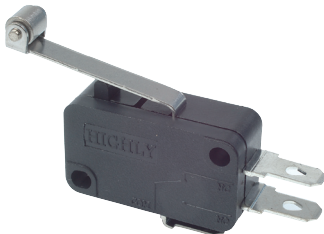
VS10N05



OF	max.	230g
RF	min.	45g
PT	max.	1.9 mm
OT	min.	0.6 mm
MD	max.	0.5 mm
OP		20.7 ± 0.6 mm



VS10N06



OF	max.	115g
RF	min.	14g
PT	max.	3.7 mm
OT	min.	1.6 mm
MD	max.	1.2 mm
OP		20.7 ± 1.2 mm

