

TDS SERIES

TDS SERIES

ORDER CODE

TDS-24-02-D

D: 0.45W

E: 0.30W

I: 0.2W

W: 0.15W

C2: 2A

COIL VOLTAGE

TYPE

03: DC 3V

05: DC 5V

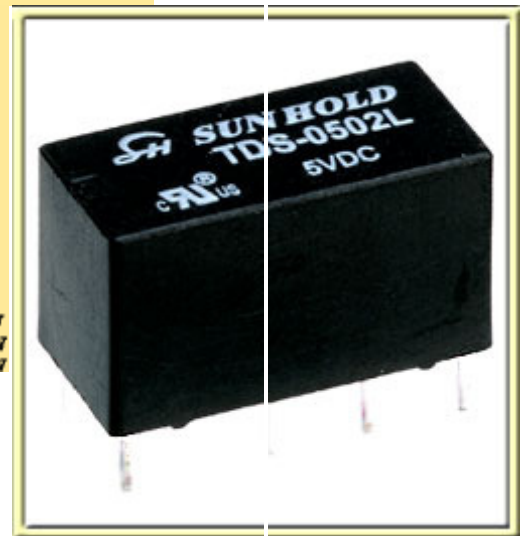
06: DC 6V

09: DC 9V

12: DC 12V

24: DC 24V

48: DC 48V



Main Features:

- 2pole Relay suitable for single circuit.
- Plastic epoxy resin sealed type for washing procedure.
- Small size and lightweight can provide high density PCB mounting.
- DIL pitch terminal.

COIL RATING (at 20°C)

	NOMINAL VOLTAGE (VDC)	COIL RESISTANCE (Ω) (+/- 10%)	POWER CONSUMPTION (W)	NOMINAL CURRENT (mA) (+/- 10%)	PULL IN VOLTAGE (VDC)	DROP OUT VOLTAGE (VDC)	MAX. ALLOWABLE VOLTAGE (VDC)
D	3V	20 Ω	0.45W	150.0 mA	75% MAX.	10 % MIN.	150 %
	5V	56 Ω		89.2 mA			
	6V	80 Ω		75.0 mA			
	9V	180 Ω		50.0 mA			
	12V	320 Ω		37.5 mA			
	24V	1280 Ω	18.8 mA				
	48V	4000 Ω	0.58W	12.0 mA			

	NOMINAL VOLTAGE (VDC)	COIL RESISTANCE (Ω) (+/- 10%)	POWER CONSUMPTION (W)	NOMINAL CURRENT (mA) (+/- 10%)	PULL IN VOLTAGE (VDC)	DROP OUT VOLTAGE (VDC)	MAX. ALLOWABLE VOLTAGE (VDC)
I	3V	25 Ω	0.36W	120.0 mA	75% MAX.	10 % MIN.	150 %
	5V	70 Ω		71.4 mA			
	6V	100 Ω		60.0mA			
	9V	220 Ω		40.9 mA			
	12V	400 Ω		30.0 mA			
	24V	1600 Ω		15.0 mA			

	NOMINAL VOLTAGE (VDC)	COIL RESISTANCE (Ω) (+/- 10%)	POWER CONSUMPTION (W)	NOMINAL CURRENT (mA) (+/- 10%)	PULL IN VOLTAGE (VDC)	DROP OUT VOLTAGE (VDC)	MAX. ALLOWABLE VOLTAGE (VDC)
L	3V	45 Ω	0.2W	66.7 mA	75% MAX.	10 % MIN.	150 %
	5V	125 Ω		40.0 mA			
	6V	180 Ω		33.3 mA			
	9V	405 Ω		22.2 mA			
	12V	720 Ω		16.7 mA			
	24V	2800 Ω		8.6 mA			

	NOMINAL VOLTAGE (VDC)	COIL RESISTANCE (Ω) (+/- 10%)	POWER CONSUMPTION (W)	NOMINAL CURRENT (mA) (+/- 10%)	PULL IN VOLTAGE (VDC)	DROP OUT VOLTAGE (VDC)	MAX. ALLOWABLE VOLTAGE (VDC)
W	3V	60 Ω	0.15W	50.0 mA	75% MAX.	10 % MIN.	150 %
	5V	167 Ω		29.9 mA			
	6V	240 Ω		25.0 mA			
	9V	540 Ω		16.7 mA			
	12V	960 Ω		12.5 mA			

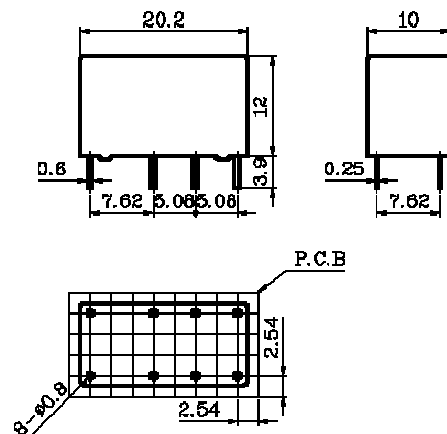
CONTACT RATING

Item	Type	2A
Rated Carrying Current		DC 24V 2A AC 120V 1A
Max. Allowable Current		2A
Max. Allowable Voltage		AC 150V DC 28V
Max. Current (continual)		2A
Contact Material		Ag alloy

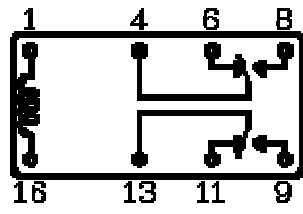
PERFORMANCE (at initial value)

Item	Type	2A
Contact Resistance		100m Ω Max. (initial value)
Operate Time		6msec Max.
Release Time		4msec Max.
Dielectric Strength		AC 1000V (1min) AC 500V (1min)
between coil & contact between contact		
Insulation Resistance		100M Ω Min.(DC 500V)
Operating Ambient Temperature		-40°C ~ +80°C
Humidity		35 to 85% RH
Vibration Resistance		10G (10~55Hz)(Dual amplitude: 1.5mm)
Shock Resistance		10G
Life Expectancy		10,000,000 ops. Min. (1800 ops./h)
Mechanically Electrically		100,000 ops. Min. (1200 ops./h)
Weight		5g (about)

DIMENSIONS (Unit : mm)



WIRING DIAGRAMS (Bottom View)



REFERENCE DATA

