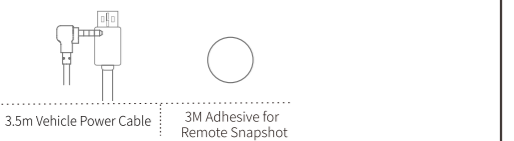
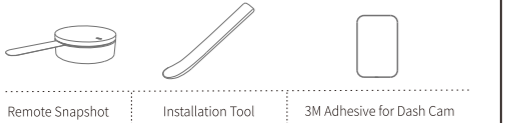
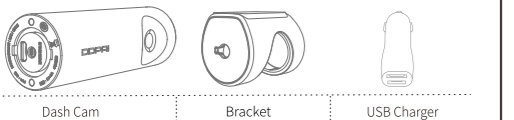
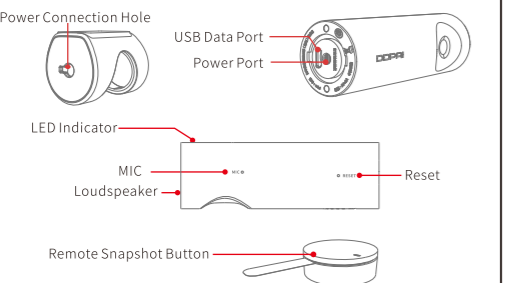


1 PACKAGE CONTENTS

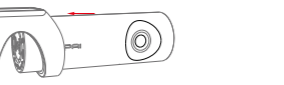


2 PRODUCT OVERVIEW



3 Installation

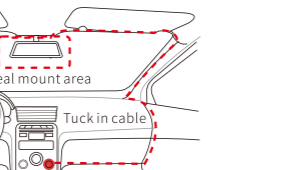
- Clean the area on the windshield where the Dash Cam will be installed, otherwise it may fall off easily in later.
- Gently push the Dash Cam into the bracket, you will hear a beep sound when it clicks into place.



- Remove the protective film from the back of the bracket, attach the adhesive side of the mount on the windshield where it has an unobstructed view of the road but does not interfere with the driver's view. As shown below.



- Use the installation tool to lift the edges of the windshield /molding and tuck in the power cable. Connect the Dash Cam to the car charger (plugged into cigarette lighter socket) and power cable.

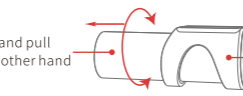


4 LED Indicator

- Turn on the engine after installation, you will hear boot tone, Dash Cam powers up and starts recording, meanwhile, LED indicator blinks slowly in normal mode.
- Adjust the angle of the lens by rotating the Dash Cam. We recommend pointing the lens slightly downwards ($\approx 10^\circ$ below horizontal), so as to record video with a 6:4 road to background ratio. It is recommended to adjust the Dash Cam position while looking at the screen to select the best viewing angle.

NOTE

To prevent the Dash Cam from falling off or slipping, the Dash Cam and bracket are fixed firmly. If you want to take off the Dash Cam to copy data via PC, please hold the bracket with one hand, rotate the Dash Cam with the other hand to pull out. As showing in below figure:



5 INSTALL DDPAI APP

Status	Description
Red	Working indicator, blink slowly in normal working mode.
Blue	Solid on indicates it is in USB data transmission mode. Blinks slowly in parking monitoring mode.
Purple	Blinks quickly indicates there is storage error. Solid on indicates it is in upgrading status.



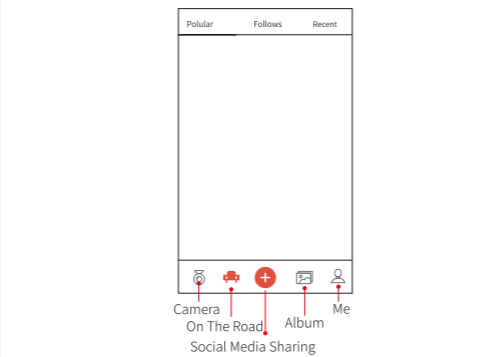
6 APP INSTRUCTION

DDPAI users community, from here you can find nearby users, see the newest activities, user experience, installation tutorial etc.

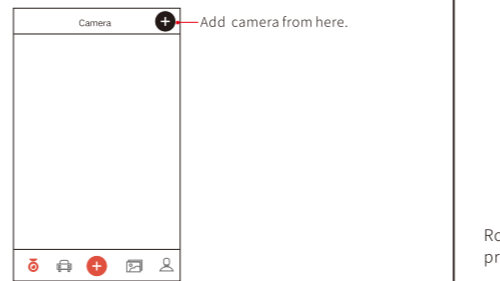
Note: In order to connect to camera Wi-Fi, please list the App in your trust application list and make sure the camera's Wi-Fi is on.

6.1 On the Road

DDPAI users community, from here you can find nearby users, see the newest activities, user experience, installation tutorial etc.



6.2 Camera



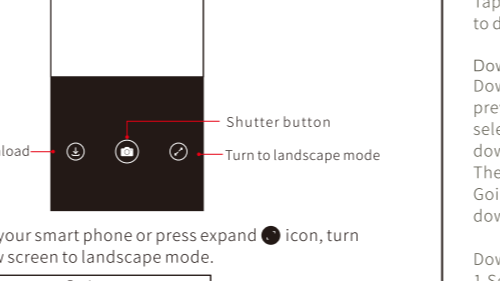
Pair Smart Phone to Dash Cam

- Launch DDPai App, tap on Camera, then tap on +.
- Choose your DDPai Dash Cam from the network list (For Android system, App will start to search Dash Cam network automatically. For iOS phone: turn on WLAN from "Settings->WLAN"). The Dash Cam's default SSID (or Wi-Fi name) is DDPai_mini3_XXXX.
- Enter the password (the default password is '1234567890').
- Click ADD CAMERA, wait a few seconds until the preview screen show.

Preview/ Playback

- Connect to Dash Cam via direct Wi-Fi, to see recent videos and real-time display.
- Open the DDPai App, and add your Dash Cam.
 - Select Camera tab, then tap on play button, this will bring you to preview page.

6.3 Social Media Sharing



6.4 Album



6.5 Me

Settings, help center and about us.

6.6 Social Media Sharing



7 UPGRADE APP AND FIRMWARE

Update via App: If a new version of the firmware is released, opening the app will prompt you to download it. You can also open the starting app, enter "Me-> About", click to detect the new version, the app will automatically download and upgrade.

Update via PC: Access your Dash Cam via PC with USB data cable. Download the latest firmware for your camera, unzip and copy the content you have unzipped onto the build-in memory. Power on the camera and it will apply the firmware automatically.

8 SPECIFICATIONS

Product Name: Dash Cam
Product Model: mini3
CPU: H.264 codec, 1600P@30fps HD video coding, low power consumption
5 MP CMOS sensor
Lens: 6-layer glass, 140° wide angle, F1.8
Wi-Fi Module: Built-in 2.4GHz Wi-Fi
Storage: Built-in eMMC high speed flash, loop recording
Video Output: Wireless video output, support Android/iOS device
G-Sensor: Built-in 6 axis gyroscope sensor, motion locking, adjustable sensitivity via App
Video Resolution: 2560*1600 @30fps
Photo Resolution: 2560*1600
RAM: 1Gb

9 FCC STATEMENT

FCC Radiation Exposure Statement:
This equipment complies with FCC radiation exposure limits set forth for an uncontrolled environment. This equipment should be installed and operated with minimum distance 20cm between the radiator & your body.

NOTE: This equipment has been tested and found to comply with the limits for a Class B digital device, pursuant to Part 15 of the FCC Rules. These limits are designed to provide reasonable protection against harmful interference in a residential installation. This equipment generates uses and can radiate radio frequency energy and, if not installed and used in accordance with the instructions, may cause harmful interference to radio communications. However, there is no guarantee that interference will not occur in a particular installation. If this equipment does cause harmful interference to radio or television reception, which can be determined by turning the equipment off and on, the user is encouraged to try to correct the interference by one or more of the following measures:

- Reorient or relocate the receiving antenna.
- Increase the separation between the equipment and receiver.
- Connect the equipment into an outlet on a circuit different from that to which the receiver is connected.
- Consult the dealer or an experienced radio/TV technician for help.

RF warning statement:

The device has been evaluated to meet general RF exposure requirement. The device can be used in portable exposure condition without restriction.

10 CAUTION

The product's optimal temperature range is -20 °C — 70 °C.

Install the device near the rear-view mirror to obtain the best open-field view. Do NOT install the Dash Cam in a location that will obstruct your required driving view.

This device adopts build-in eMMC card, featuring in high efficiency, stability, long use life. The eMMC card should be formatted via App or PC regularly to maximize the lifetime of the memory card.

Do not use cardboard, paper towel, or napkin to clean the lens.

Do not attempt to repair, dismantle, or modify the Dash Camera hardware by yourself.

Do not install the product in an environment with high humidity, or combustible gases or liquids.

Drawings for illustration purpose only. Actual product may vary due to product enhancement.

11 CUSTOMER SUPPORT

For customer support and firmware updates please visit en.ddpai.com.
You can also email a Customer Support expert at support@ddpai.com.

12 Other

This product is made in China.
Manufacturer Name:DDPAI Technology Co., Ltd
Manufacturer Address:Floor 12, Yihua finance building, software park,Yuehai Sub district, Nanshan district, Shenzhen

The Warranty Period:1 year
Use Priord:2 year