

# RIGOL

## Data Sheet

### DM3058 Digital Multimeter

#### Product Overview

DM3058 is a digital multimeter designed with 5 ½ digits readings resolution especially fitting to the needs of high-precision, multifunction, and automatic measurement.

#### Applications

- R&D Laboratory
- Scientific Research and Education
- Detection and Maintenance
- Quality Test
- Automatic Production Testing

#### Main Features

- Real 5 ½ digits readings resolution
- Up to 123 rdgs/s of measurement speed
- True-RMS AC Voltage Current measuring
- Quickly Save or Recall the 10 groups of Preset Configuration
- Preset 10 groups of Standard Sensor Configuration, built-in Thermocouple compensate in Cold Terminal
- Clone or backup all the configurations within instrument into other DM3058 via U-disc
- The first 5 ½ digit digital multimeter passing LXI Criterion in industry, which can achieve system integration easily
- With easy, convenient and flexible random sensor measurement control software: UltraSensor
- Standard configuration interface: USB Device, USB Host, LAN, RS-232, GPIB, and support U-disc storage and Web remote control
- Support remote control via a command line and enable to compatible with commands from main stream multimeters



#### Easy to Use Design

- 256×64 LCD
- Support double display, Chinese and English menu
- Push-help makes information acquire more easier
- File management (support for U-disc and local storage)

#### Powerful Measurement Functions

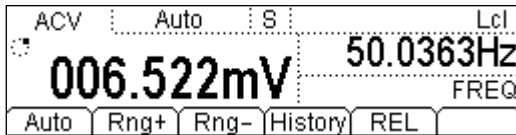
##### ➤ Basic Measurement Function

- DC Voltage: 200 mV ~ 1000 V
- DC Current: 200 μA ~ 10 A
- AC Voltage: True-RMS, 200 mV ~ 750 V
- AC Current: True-RMS, 20 mA ~ 10 A
- 2-Wire, 4-Wire Resistance: 200 Ω ~ 100 MΩ
- Capacitance Measurement: 2 nF ~ 10000 μF
- Continuity Test: Range is fixed at 2 kΩ
- Diode Test: Range is fixed at 2.0 V
- Frequency Measurement: 20 Hz ~ 1 MHz
- Period Measurement: 1 μs ~ 0.05 s
- Random Sensor Measurement: Support for 6 types of sensor: DCV, DCI, Freq, 2WR, 4WR and TC

##### ➤ Math Function

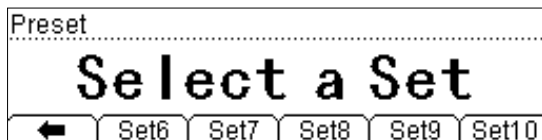
Max, Min, Average, Standard Deviation, Pass/Fail, dBm, dB, Relative Measurement and Vertical chart

## Double Display



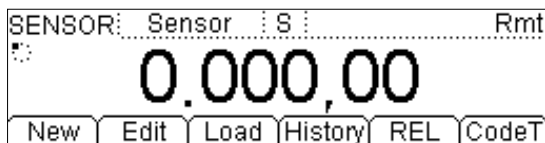
Double Display function makes your measurements achieve maximum results with little effort. It can display two performances of a signal simultaneously instead of two multimeters or measurements in the past.

## Preset Mode



Based on Preset Mode, the worker operation on product line could be greatly simplified. Besides, 10 groups of Preset Configuration are available to be stored and recalled.

## Unique Random Sensor



Random Sensor measurement is a new conception being forward to meet user's requirements. By this particular function, you can easily connect Pressure Sensor or Flux Sensor or Temperature Sensor.

DM3058 supports DCV, DCI, and Freq, 2WR, 4WR and Thermocouple TC 6 kinds of Sensor in all. Meanwhile, there are 10 groups of basic Sensor preset within the instrument.

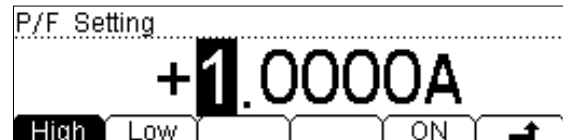
Also, the built-in Thermocouple Cold Terminal temperature sensor can be used for measuring temperature of thermocouple

## Mirror Image Configuration



All the configurations (system and sensor configuration) of DM3058 can be cloned into other DM3058 on product line via U-disc to improve work efficiency.

## Pass/Fail



Pass/Fail test function can prompt for signals beyond the range based on specified higher and lower limit, and make test result more obvious.

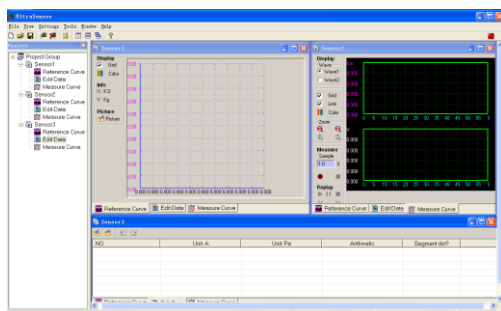
## LXI & Web Remote Control

DM3058 is the first 5½ digit digital multimeter passing LXI Criterion in industry that makes system integration easier.

Remote Control for DM3058 can be achieved by virtual panel from Web page in the same operation way with front panel of instrument.



## Easy, Convenient and Flexible Control Software



UltraSensor Software Interface

UltraSensor is used to control random sensor. The main functions include:

- Create a project for random sensor measurement which can be download to DM3058;
- Connect with DM3058 to achieve random sensor measurement;
- Monitor the sensor data in real time and show them in the form of figure;
- Enable to save data in the format of CSV and TXT, and reference curve in the format of BMP.

# Specifications

## DC Characteristics

Accuracy  $\pm$  (% of reading + % of range)<sup>[1]</sup>

Function	Range <sup>[2]</sup>	Test current or Load voltage	1 Year 23°C $\pm$ 5°C	Temperature Coefficient 0°C - 18°C 28°C - 50°C
DC Voltage	200.000 mV		0.015 + 0.004	0.0015 + 0.0005
	2.00000 V		0.015 + 0.003	0.0010 + 0.0005
	20.0000 V		0.015 + 0.004	0.0020 + 0.0005
	200.000 V		0.015 + 0.003	0.0015 + 0.0005
	1000.00 V <sup>[4]</sup>		0.015 + 0.003	0.0015 + 0.0005
DC Current	200.000 $\mu$ A	<8 mV	0.055 + 0.005	0.003 + 0.001
	2.00000 mA	<80 mV	0.055 + 0.005	0.002 + 0.001
	20.0000 mA	<0.05 V	0.095 + 0.020	0.008 + 0.001
	200.000 mA	<0.5 V	0.070 + 0.008	0.005 + 0.001
	2.00000 A	<0.1 V	0.170 + 0.020	0.013 + 0.001
10.0000 A <sup>[5]</sup>	<0.3 V	0.250 + 0.010	0.008 + 0.001	
Resistance <sup>[3]</sup>	200.000 $\Omega$	1 mA	0.030 + 0.005	0.0030 + 0.0006
	2.00000 k $\Omega$	1 mA	0.020 + 0.003	0.0030 + 0.0005
	20.0000 k $\Omega$	100 $\mu$ A	0.020 + 0.003	0.0030 + 0.0005
	200.000 k $\Omega$	10 $\mu$ A	0.020 + 0.003	0.0030 + 0.0005
	2.00000 M $\Omega$	1 $\mu$ A	0.040 + 0.004	0.0040 + 0.0005
	10.0000 M $\Omega$	200 nA	0.250 + 0.003	0.0100 + 0.0005
	100.000 M $\Omega$	200 nA    10 M $\Omega$	1.75 + 0.004	0.2000 + 0.0005
Diode Test	2.0000 V <sup>[6]</sup>	1 mA	0.05 + 0.01	0.0050 + 0.0005
Continuity Test	2000 $\Omega$	1 mA	0.05 + 0.01	0.0050 + 0.0005

### Remarks:

- [1] Specifications are for 0.5 hour warm-up, "Slow" measure and calibration temperature 18°C - 28°C.
- [2] 20% over range on all ranges except for DCV 1000 V, ACV 750 V, DCI 10 A and ACI 10 A.
- [3] Specifications are for 4-wire measure or 2-wire measure under "REF" operation.  $\pm$  0.2  $\Omega$  of extra errors will be generated if perform 2-wire measure without "REF" operation.
- [4] Plus 0.02 mV of error per 1 V after the first  $\pm$ 500 VDC.
- [5] 30 seconds OFF after 30 seconds ON is recommend for the continuous current that higher than DC 7 A or AC RMS 7 A.
- [6] Accuracy specifications are only for voltage measuring at input terminal. The typical value of current under measure is 1 mA. Voltage drop at the diode junction may vary with current supply.

DC Voltage	
Input Resistance	200 mV and 2 V range 10 M $\Omega$ or >10 G $\Omega$ selectable (Input signals that exceed $\pm$ 2.5 V in these ranges will pass the 100 k $\Omega$ (typical) clamp resistance.)
Input Bias Current	<90 pA, 25°C
Input Protection	1000 V on all ranges
CMRR (common mode rejection ratio)	120 dB (For the 1 k $\Omega$ unbalanced resistance in LO lead, maximum $\pm$ 500 VDC)
NMRR (normal mode rejection ratio)	60 dB at "slow" measurement rate 20 dB are added if open the "AC filter" (Settling time will add 0.35 s while source impedance nears zero)
Resistance	
Testing Method	4-wire resistance or 2-wire resistance optional For current source refer to LO input
Open-circuit Voltage	P/F in <8 V
Maximum Lead Resistance (4-wire resistance)	10% of ranges, on the range of 200 $\Omega$ , 1 k $\Omega$ , for each lead 1 k $\Omega$ , on all other ranges, for each lead
Input Protection	1000 V, on all ranges
DC Current	

Shunt Resistor	200 $\mu$ A sampling voltage < 8 mV 2 mA sampling voltage < 80 mV 1 $\Omega$ for 20 mA, 200 mA 0.01 $\Omega$ for 2 A, 10 A
Input Protection	Rear panel: accessible 10 A, 250 V fast-melt fuse Internal: 12 A, 250 V slow-melt fuse
<b>Continuity / Diode Test</b>	
Measurement Method	1 mA $\pm$ 5% constant-current source, < 8 V open-circuit voltage
Response Time	123 samples/sec, with beeper
Continuity Threshold	Adjustable between 1 $\Omega$ and 2000 $\Omega$
Input Protection	1000 V
<b>Setup time Attentions</b>	
The setup time about voltage measurement is influenced by source resistance and media characteristics of cable as well as input signal	

## AC Characteristics

Accuracy  $\pm$  (% of reading + % of range) <sup>[1]</sup>

Function	Range <sup>[2]</sup>	Frequency Range	Accuracy $\pm$ (% of reading + % of range) <sup>[1]</sup>	
			1 Year 23°C $\pm$ 5°C	Temperature Coefficient 0°C - 18°C 28°C - 50°C
True RMS AC Voltage <sup>[3]</sup>	200.000 mV	20 Hz – 45 Hz	1.5 + 0.10	0.01 + 0.005
		45 Hz – 20 kHz	0.2 + 0.05	0.01 + 0.005
		20 kHz – 50 kHz	1.0 + 0.05	0.01 + 0.005
		50 kHz – 100 kHz	3.0 + 0.05	0.05 + 0.010
	2.00000 V	20 Hz – 45 Hz	1.5 + 0.10	0.01 + 0.005
		45 Hz – 20 kHz	0.2 + 0.05	0.01 + 0.005
		20 kHz – 50 kHz	1.0 + 0.05	0.01 + 0.005
		50 kHz – 100 kHz	3.0 + 0.05	0.05 + 0.010
	20.0000 V	20 Hz – 45 Hz	1.5 + 0.10	0.01 + 0.005
		45 Hz – 20 kHz	0.2 + 0.05	0.01 + 0.005
		20 kHz – 50 kHz	1.0 + 0.05	0.01 + 0.005
		50 kHz – 100 kHz	3.0 + 0.05	0.05 + 0.010
	200.000 V	20 Hz – 45 Hz	1.5 + 0.10	0.01 + 0.005
		45 Hz – 20 kHz	0.2 + 0.05	0.01 + 0.005
		20 kHz – 50 kHz	1.0 + 0.05	0.01 + 0.005
		50 kHz – 100 kHz	3.0 + 0.05	0.05 + 0.010
750.000 V	20 Hz – 45 Hz	1.5 + 0.10	0.01 + 0.005	
	45 Hz – 20 kHz	0.2 + 0.05	0.01 + 0.005	
	20 kHz – 50 kHz	1.0 + 0.05	0.01 + 0.005	
	50 kHz – 100 kHz	3.0 + 0.05	0.05 + 0.010	
True RMS AC Current <sup>[5]</sup>	20.0000 mA	20Hz – 45 Hz	1.5 + 0.10	0.015 + 0.015
		45 Hz - 2 kHz	0.50 + 0.10	0.015 + 0.006
		2 kHz -10 kHz	2.50 + 0.20	0.015 + 0.006
	200.000 mA	20 Hz - 45 Hz	1.50 + 0.10	0.015 + 0.005
		45 Hz – 2 kHz	0.30 + 0.10	0.015 + 0.005
		2 kHz - 10 kHz	2.50 + 0.20	0.015 + 0.005
	2.00000 A	20 Hz – 45 Hz	1.50 + 0.20	0.015 + 0.005
		45 Hz - 2 kHz	0.50 + 0.20	0.015 + 0.005
		2 kHz – 10 kHz	2.50 + 0.20	0.015 + 0.005
	10.0000 A <sup>[5]</sup>	20 Hz – 45 Hz	1.50 + 0.15	0.015 + 0.005
		45 Hz - 2 kHz	0.50 + 0.15	0.015 + 0.005
		2 kHz – 5 kHz	2.50 + 0.20	0.015 + 0.005

### Additional wave crest factor error (not Sine)<sup>[6]</sup>

Wave crest coefficient	Error (% range)
1 - 2	0.05
2 - 3	0.2

#### Remarks:

[1] Specifications are for 0.5 hour warm-up, "Slow" measure and calibration temperature 18°C - 28°C.

[2] 20% over range on all ranges except for DCV 1000 V, ACV 750 V, DCI 10 A and ACI 10 A.

[3] Specifications are for amplitude of sine wave input >5% of range. 750 V range limited to 8x10<sup>7</sup> Volt-Hz. For inputs

- from 1% to 5% of range and <50 kHz, add 0.1% of range extra error. For 50 kHz to 100 kHz, add 0.13%.
- [4] Specifications are for sine wave input >5% of range. 0.1% errors will be added when the range of input sine wave is 1% ~ 5%.
- [5] 30 seconds OFF after 30 seconds ON is recommend for the continuous current that higher than DC 7 A or AC RMS 7 A.
- [6] For frequency<100 Hz.

<b>True RMS AC Voltage</b>	
Measurement Method	AC coupled true RMS measure - up to 1000 V DC bias are permitted on every range
Wave Crest Factor	≤ 3 at full scale
Input Impedance	1 MΩ ± 2% in parallel with <100 pF on all ranges
AC Filter Bandwidth	20 Hz ~ 100 kHz
CMRR (common mode rejection ratio)	60 dB (For the 1 kΩ imbalance resistance among Lo lead and <60 Hz, maximum ±500 VDC)

<b>True RMS AC Current</b>	
Measurement Method	DC coupled to the fuse and shunt; AC coupled the True RMS measurement (measures the AC components only)
Wave Crest Factor	≤ 3 at full scale
Maximum Input	The DC + AC current peak value <300% of range. The RMS current including DC current is <10 A
Shunt Resistor	1 Ω for 20 mA, 200 mA 0.01 Ω for 2 A, 10 A
Input Protection	Rear panel: accessible 10 A, 250 V fast-melt fuse Internal: 12 A, 250 V slow-melt fuse

#### **Setup Time Attentions**

Make sure that the RC return at input terminal has been in a stable state completely (higher than 1 s) before accurate measurement;

Input >300 Vrms (or >5 Arms) will cause the self heating of the signal conditioning component to generate error, this error is included in the characteristics of the instrument. Internal temperature variation results from the self heating will cause additional an error on ac range that is lower than 0.03% of readings, and it will disappear after a few minutes

## **Frequency and Period Characteristics**

**Accuracy ± (% of reading + % of range) <sup>[1]</sup>**

Function	Range	Frequency Range	Accuracy ± (% of reading + % of range) <sup>[1]</sup>	
			1 Year 23°C±5°C	Temperature Coefficient 0°C - 18°C 28°C - 50°C
Frequency/Period	200 mV - 750 V <sup>[2]</sup>	20 Hz - 2 kHz	0.01 + 0.003	0.002 + 0.001
		2 kHz - 20 kHz	0.01 + 0.003	0.002 + 0.001
		20 kHz - 200 kHz	0.01 + 0.003	0.002 + 0.001
		200 kHz - 1 MHz	0.01 + 0.006	0.002 + 0.002
	20 mA - 10 A <sup>[3]</sup>	20 Hz - 2 kHz	0.01 + 0.003	0.002 + 0.001
		2 kHz - 10 kHz	0.01 + 0.003	0.002 + 0.001

#### **Remarks:**

- [1] Specifications are for 0.5 hour warm-up.
- [2] Except for special marks, the AC input voltage is 15% to 120% of range when <100 kHz and 40% to 120% of range when >100 kHz. 750 V range is limited to 750 VRMS. 200 mV ranges is for full scale or higher. For inputs from 30 mV to 200 mV, multiply total % of reading error by 10.
- [3] For AC input current from 15% to 120% of range except where noted. 20 mA range specifications are for full scale. For inputs from 5 mA to 20 mA, multiply total % of reading error by 10. 10 A range is for AC input current from 25% to 100% of range.

#### **Frequency and Period**

Measurement Method: Reciprocal-counting technique, AC-coupled input, AC voltage or AC current measurement function

#### **Measure Attentions**

Generally, errors are leaded into all frequency counters when measuring low voltage or low frequency signal. Shielding input can extremely help to reduce measuring errors caused by exterior noise

#### **Setup Time Attentions**

If the variational DC components appeared in signals under measure, errors may be caused while measuring period or frequency. Please ensure that the RC loop at input terminal must be stable during exact measuring (higher than 1 sec)

## Capacitance Characteristics

Function	Range <sup>[2]</sup>	Maximum Testing Current	Accuracy ± (% of reading + % of range) <sup>[1,2]</sup>	
			1 Year 23°C±5°C	Temperature Coefficient 0°C - 18°C 28°C - 50°C
Capacitance	2.000 nF	200 nA	3 + 1.0	0.08 + 0.002
	20.00 nF	200 nA	1 + 0.5	0.02 + 0.001
	200.0 nF	2 µA	1 + 0.5	0.02 + 0.001
	2.000 µF	10 µA	1 + 0.5	0.02 + 0.001
	200 µF	100 µA	1 + 0.5	0.02 + 0.001
	10000 µF	1 mA	2 + 0.5	0.02 + 0.001

### Remarks:

[1] Specifications are for 0.5 hour warm-up and "REF" operation. Using of non-film capacitor may generate additional errors.

[2] Specifications are for from 1% to 120% on 1 nF range and ranges from 10% to 120% on other ranges.

### Capacitance Measuring

Measurement Method	Measure the rate of change of voltage generated during the current flowing the capacitance
Connection Type	2-wire
Input Protection	1000 V on all ranges

### Measure Attentions:

Small capacitance is easily influenced by external noise and thus causes errors while measuring, shielding input can extremely help to reduce this kind of errors

## Other Measuring Characteristics

### Triggering and Memory

Samples/Trigger	1 ~ 2000	
Trigger Delay	8 ms ~ 2000 ms optional	
External Trigger Input	Input Level	TTL compatible (High level when left input terminal is hanging in the air)
	Trigger Condition	Selectable
	Input Impedence	>20 kΩ,
	Min Pulse	500 µs
VMC Output	Electric Level	TTL compatible ( input >=1 kohm loads )
	Output Polarity	straight polarity and negative polarity optional
	Input Impedance	200 ohm, typical

### Arbitrary Sensor

Support for multiply types of sensor such as Thermocouple, DC Voltage, DC Current, Resistance (2-wire or 4-wire) and Frequency output; With thermocouple compensation at cold junction.

Output Polarity: straight polarity and negative polarity optional

Preset ITS-90 transform of B, E, J, K, N, R, S and T thermocouple and transform of platinum Pt100, Pt385 resistance temperature sensor

### Math Functions

Pass/Fail, REL (RELative), Min/Max/Average, dBm, dB, Hold, Histogram, Standard deviation

### History Records

Volatile Memory	2000 readings of history records
Nonvolatile Memory	10 gourps of history records (2000 readings/group); 10 groups of sensor records: (1000 readings/group); 10 groups of setting records of instrument; 10 groups of setting records of arbitrary sensor; support U-disk external storage

## General Specifications

<b>Power Supply</b>	
AC 100 V ~ 120 V	45 Hz ~ 440 Hz
AC 200 V ~ 240 V	45 Hz ~ 66 Hz
Consumption	20 VA peak value
<b>Mechanism</b>	
Dimension	107.0 mm×231.6 mm×290.5 mm
Weight	2.5 kg
<b>Other Characteristics</b>	
Display Screen	LCD display with 256×64 lattices, support for Double display, Menu display, Operating help and English/Chinese bilingual.
Operating Environment	Full accuracy from 0°C to 50°C; 80% R.H. and 40°C, non condensing
	Storage Temperature: -20°C ~ 70°C
	Shock and Vibration: conforming to MIL-T-28800E, III, 5 level (only for sine) height above sea level: up to 3000 meters
Safety	Conforming to IEC61010-1: 2001. Measure CAT I 1000 V/CAT II 600 V Class of pollution: 2
Remote Interface	GPIB, 10/100Mbit LAN, USB2.0 Full Speed Device & Host (U disc available), RS-232C
Programmer Language	RIGOL 3058 SCPI, FLUKE45, Agilent34401A
LXI Compatibility	LXI Class C, Version1.1
Warm Up Time	30 minutes

## Ordering Information

### Name of Product

**RIGOL** DM3058 Digital Multimeter

### Standard Accessories

- A Power Cord that fits the standard of destination country
- Two Test Leads (black and red)
- Two Alligator Clips (black and red)
- An USB Data Cable
- A Backup Fuse
- A Quick Guide
- User's Guide and Application software (CD-ROM)

### Optional Accessories

- Kelvin Test Clips
- RS232 Cable

## Contact Us

If you have any problem or requirement during using our products, please contact **RIGOL** Technologies, Inc. or the local distributors.

Domestic: Please call

Tel: (86-10) 8070 6688

Fax: (86-10) 8070 5070

**Service & Support Hotline: 800 810 0002**

9:00 am –5: 00 pm from Monday to Friday

Or by e-mail:

**Service@rigol.com**

Or mail to:

**RIGOL** Technologies, Inc.

156# CaiHe Village, ShaHe Town, ChangPing District, Beijing, China

Post Code: 102206

Overseas: Contact the local **RIGOL** distributors or sales office.

For the latest product information and service, visit our website: <http://www.rigolna.com/>

## Warranty

Very thank you for choosing **RIGOL** products!

**RIGOL** Technologies, Inc. warrants that this product will be free from defects in materials and workmanship from the date of shipment. If a product proved defective within the respective period, **RIGOL** will provide repair or replacement as described in the complete warranty statement.

For the copy of complete warranty statement or maintenance, please contact with your nearest **RIGOL** sales and service office.

**RIGOL** do not provide any other warranty items except the one being provided by this summary and the warranty statement. The warranty items include but not being subjected to the hint guarantee items related to tradable characteristic and any particular purpose.

**RIGOL** will not take any responsibility in cases regarding to indirect, particular and ensuing damage.