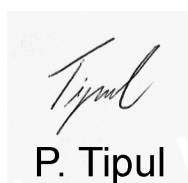


2J230GP

(DATASHEET)

Type
Frequencies
Mounting
Revision

WiFi/Bluetooth antenna
WIFI / BLUETOOTH (2.4 GHz)
Wall Mount
00



P. Tipul

1. SPECIFICATION

1.1. Electrical Specifications

Frequencies	WIFI / BLUETOOTH (2.4 GHz)
Impedance	50 Ohms
Polarization	VERTICAL
Gain	5 dBi Max
VSWR	<2.5:1
Power handling	20W
Operating temperature	-40°C to +85°C

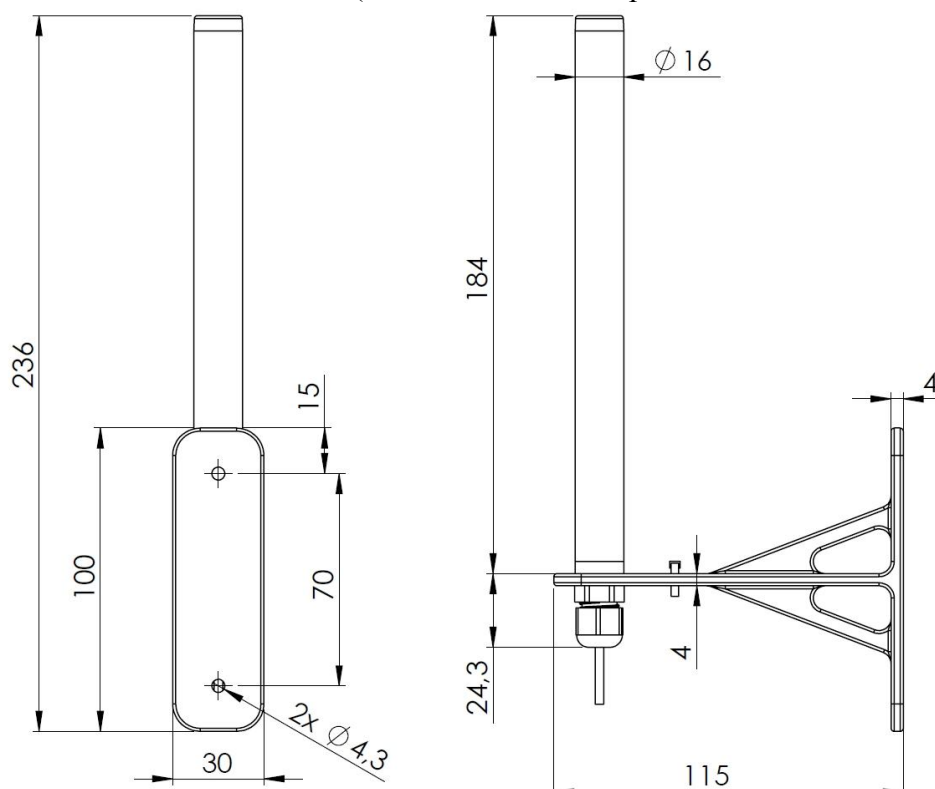
1.2. Connection Specifications

Connector type:	SMA
Cable:	RG58
Cable length:	50 cm

For different cable length and connector type ask our sales team.

1.3. Mechanical Specifications and Dimensions

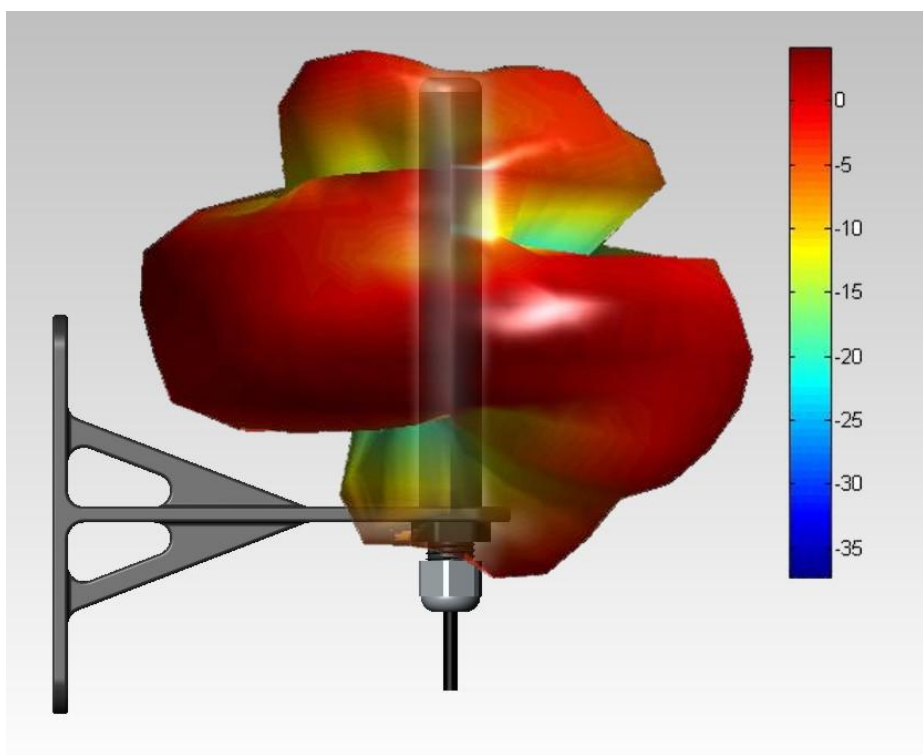
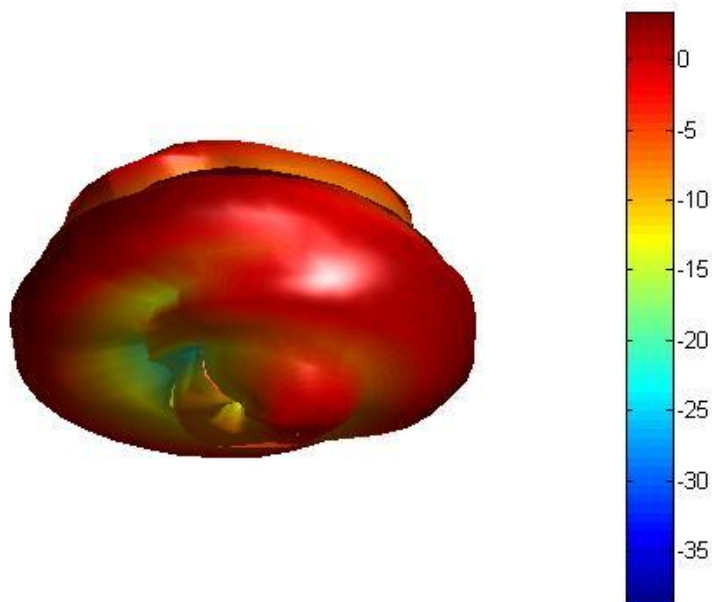
Material:	ABS
Max. dimensions:	115mm x 236mm x 30mm (H x L x W)
Weight:	82.6 g 'weight counted with connection above'
Colour:	Black (for different colours please ask our sales team)



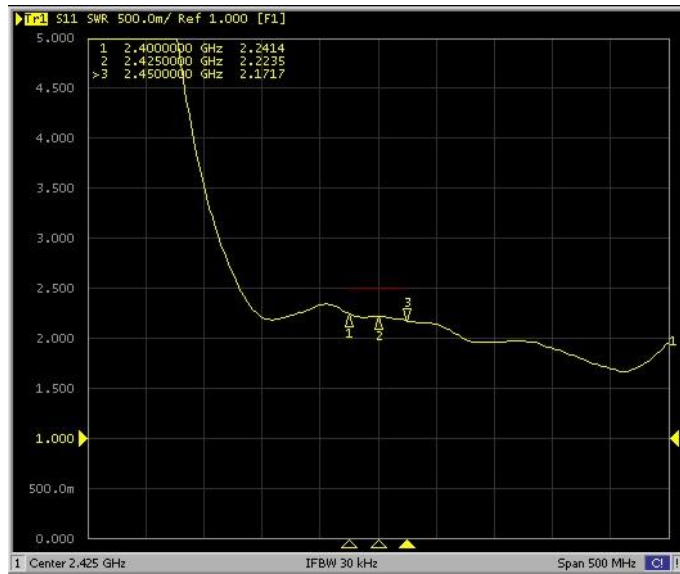
2. MEASUREMENT

3D chart showing gain at 2.4GHz what is around 3.4dBi. Maximum measured gain was at 2.428GHz with value 4.11dBi. Bottom of 3D chart on first picture is top of the antenna. On second picture is 3D chart implemented on antenna.

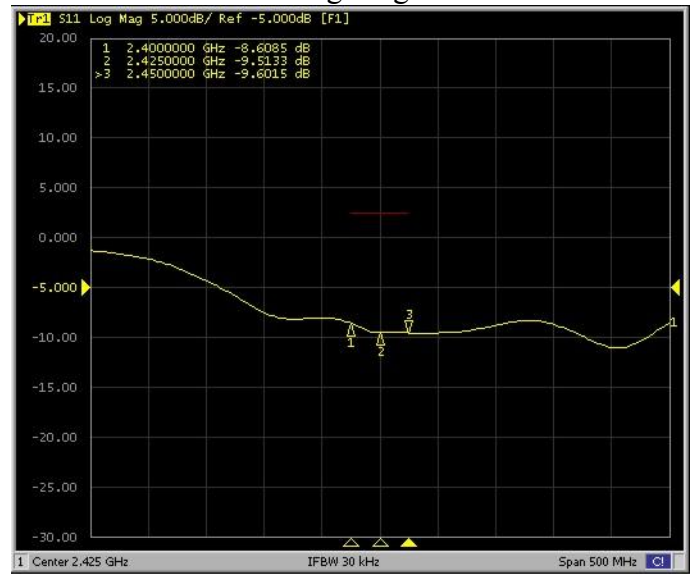
Freq = 2.4GHz Az= 45 EL= -45



VSWR



Log Mag



3. PICTURES

