



# 002 Series WiFi Thermostat

## User Guide



For Water Heating/Boiler/Electric Heating

### Welcome

Thank you for your purchase. Your new thermostat will provide uniform and comfortable temperature control throughout every room in your property. We combine the technology, craftsmanship and the highest quality materials together to provide you a safe, reliable product with sleek and contemporary design. Please read this installation/ programming manual for comprehensive instructions on installing and operating your thermostat. Please also ensure a suitably qualified person to install your thermostat and comply with all local regulations.

### Thermostat Colors:

- 002FB: full black
- 002BW: black and white
- 002FW: full white
- 002WB: white and black

### In the box you will find

Thermostat	1pc	Screws	2pc
User Guide	1pc	Floor Sensor (2.5m)	1pc
QC Passed	1pc		

(This accessory is suitable for GB, not included in the package and needs to be purchased separately)

### ABOUT YOUR THERMOSTATS

The 002 series range has been developed to control electric underfloor, water heating or water/gas boiler systems. These units are designed for use in commercial, industrial, civil and domestic properties.

### MODEL DEFINITION

GA: Water heating, 5A GC: Water/Gas Boiler, 5A  
 GB: Electric floor heating, 16A  
 L: Backlight  
 P: Weekly Programmable  
 W: Wifi  
 N: Modbus Communication  
 S2: Both internal sensor and floor external sensor  
 For example: 002 GCLP

### FEATURES

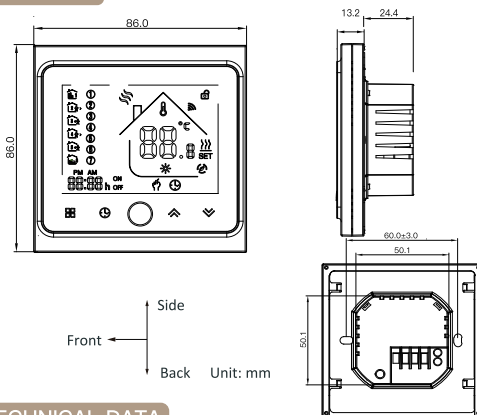
#### On Appearance

- Convenient operation creates convenient life.
- Options of black and white housing.
- Fashion design blends in with any decor.
- Touch Screen display with backlight is easy to read, even in the dark.
- Bright buttons always remind you the world truly exist.
- Easy UI interface could be used even by child.

#### On Functionality

- 0.5°C Accuracy keeps temperature within the level you set.
- Powerful functions are available such as Modbus/WIFI etc.
- Data memory when power is off.
- 5+1+1 six periods programmable maximize comfort and economy.
- Create thermostat group to Centralized control
- Integrated with Amazon Echo, Google Home, Tmall Genie.
- All setting languages synchronize your time zone, address and language.
- No limit to add rooms and support Smart Scene.

### DIMENSION



### TECHNICAL DATA

Power Supply: 95 ~ 240 VAC, 50 ~ 60HZ  
 Current Load: 5A (water heating/water boiler/gas boiler)  
 16A (electric heating)

Sensor: NTC3950, 10K  
 Accuracy: ±0.5°C  
 Set Temp. Range: 5 ~ 35°C  
 Display Temp. Range: 5 ~ 99°C  
 Ambient Temp.: 0~ 45 °C  
 Ambient Humidity: 5 ~ 95 % RH (Non Condensing)  
 Storage Temp.: -5~45 °C  
 Power Consumption: <1.5W  
 Timing Error: < 1 %

Shell Material: PC +ABS ( flame retardant)  
 Installation Box: 86 \* 86mm Square or European 60mm Round Box  
 Wire Terminals: Wire 2 x 1.5 mm<sup>2</sup> or 1 x 2.5 mm<sup>2</sup>  
 Protection Class: IP 20  
 Buttons: Capacitive Touch Buttons

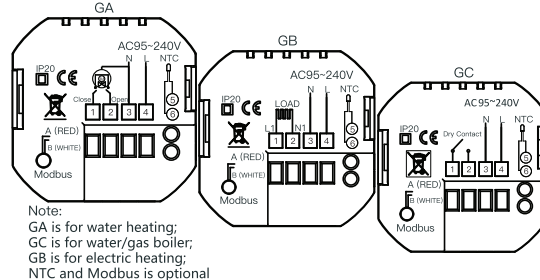
### BEFORE WIRING AND INSTALLING...

- Read these instructions carefully. Failure to follow them could damage the product or cause a hazardous condition.
- Check the ratings given in the instructions and on the product to make sure the product is suitable for your application.
- Installer must be a trained, experienced service technician.
- After installation is complete, check out product operation as provided in these instructions.

### CAUTION

**Electrical Shock or Equipment Damage Hazard. can shock individuals or short equipment circuitry. Disconnect power supply before installation.**

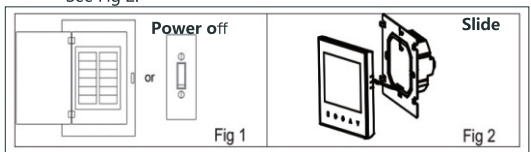
### WIRING



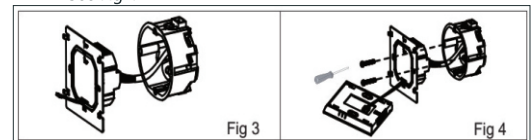
Note:  
 GA is for water heating;  
 GC is for water/gas boiler;  
 GB is for electric heating;  
 NTC and Modbus is optional

### INSTALLATION

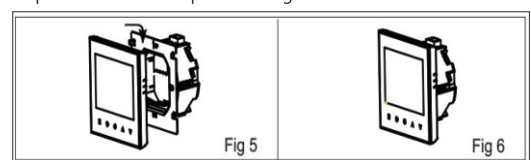
Your thermostat is suitable for installation within a standard 86mm pattress box or European 60mm pattress box.  
 Step 1. Keep power off. See Fig 1.  
 Step 2. Slide the LCD assembly down to remove the mounting plate. See Fig 2.



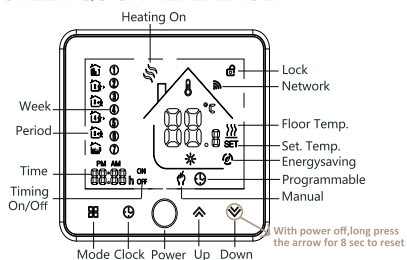
Step 3. Connect power supply, load into the appropriate termina (see "Wiring your thermostat" for details and Fig 3).  
 Step 4. Fix the mounting plate into the wall with screws in the box. See Fig 4.



Step 5. Fasten body of thermostat and the mounting plate through rotating. See Fig 5.  
 Step 6. Installation complete. See Fig 6.



### HOME SCREEN QUICK REFERENCE



### OPERATION

#### During Power On

- Power On/off:** Press to turn the thermostat on/off.
- Manual & Programmable**

Touch to change between manual mode and programmable mode. In manual mode, will show in the bottom left of the screen. In programmable mode, the period icon will show in the right side.

#### 3. Setting Temperature

In the programmable mode, time and set-point could not be adjusted. If the user want to change, please go to manual mode or programmable setting. In the mode of manual, press to set the desired temperature.

#### 4. Adjusting/Setting the Clock

Touch the icon to set minute, hour and weekday (1 = Monday, 2 = Tuesday etc.) by using the arrows. Press once more to confirm and exit.

#### 5. Locking your Thermostat

Press and hold the for 5 seconds to lock/unlock your thermostat. In item 3 of high sensor options, you can select full lock or half lock.

#### 6. Adjusting/Setting the Program Schedules

When Wi-Fi connection is made, your thermostat will automatically accept the program schedule made via the APP on your device (see below for detailed instructions). If you want to set the program schedules through your thermostat, simply follow the instructions as below:

Please note: Setting the program schedule through your thermostat can only be carried out when there is no WiFi connection between your thermostat and smartphone/tablet.

Touch to change between manual mode and programme mode.

In the manual mode, will display in the bottom of the screen. In programmable mode, touch and hold the icon until the weekday schedule setting appear (12345 will show along the left of the screen). Use the and arrows to adjust the on time. Press the icon and use the and arrows to set the time (1st period). Press again and use and arrows to set the temp. Press the icon and use the and arrows to set the time and temp. (2nd period). Repeat this process for periods 3, 4 and 5. Press the icon once more to enter the Saturday schedule settings (6 will show along the left of the screen). Repeat the above process to set the period, temp. and Sunday schedule.

Press once more to confirm and exit.

### Default settings for program schedule

Time display	WEEKDAY (MONDAY - FRIDAY) (12345 shows on screen)		WEEKEND (SATURDAY) (6 shows on screen)		WEEKEND (SUNDAY) (7 shows on screen)	
	TIME	TEMPERATURE	TIME	TEMPERATURE	TIME	TEMPERATURE
Period 1	06:00	20°C	06:00	20°C	06:00	20°C
Period 2	08:00	15°C	08:00	20°C	08:00	20°C
Period 3	11:30	15°C	11:30	20°C	11:30	20°C
Period 4	13:30	15°C	13:30	20°C	13:30	20°C
Period 5	17:00	22°C	17:00	20°C	17:00	20°C
Period 6	22:00	15°C	22:00	15°C	22:00	15°C

A separate schedule may be set for weekdays (Mon - Fri) and for weekends (Sat or Sun).

### 7. Checking the Temperature of Floor Sensor

Press and hold the arrow for 5 seconds to display the temp. of floor sensor.

### Setting the Functions and Options

In order to reach system function, turn the thermostat off. Press and hold and at the same time for 5 secs. Then press to scroll through the available functions. Use the and arrows to change the available options. All settings are confirmed automatically.

Code	Function	Setting and options	Default
1	Temperature compensation	-9 to+ 9 °C (for internal sensor)	-3
2	Deadzone Temperature	1~5°C	1
3	Button Locking	00: All buttons are locked except power button. 01: All buttons are locked.	01
4	Sensor Types	In: Internal Sensor (to control the temp.) Ou: External Sensor (to control the temp.) AL: Internal/External Sensor (Internal sensor to control the temp., external sensor to limit the temp.)	AL
5	Min. Set Temp.	5~15°C	05
6	Max. Set Temp.	15~45°C	35
7	Display Mode	00: Display both settemp. and room temp., 01: Display settemp. only	00
8	Low Temperature Protection Petting	0~10°C	00
9	High Temperature Protection Petting	25~70°C	45
A	Economy Mode	00: Non-energy saving Mode 01: Energy saving mode	0
B	Economy Temp.	0~30°C	20

## ABOUT WIFI

### WI-FI CONNECTION

When first time using Wi-Fi thermostat, you must configure the Wi-Fi signal and settings on your smartphone or tablet. This will allow communication of your connected devices.

Step 1. Download MOES App on App store or scan the QR code



MOES App is upgraded as much more compatibility than Tuya Smart/Smart Life App, functional well for scene controlled by Siri, widget and scene recommendations as the fully new customized service. (Note: Tuya Smart/Smart Life App still works, but MOES App is highly recommended)

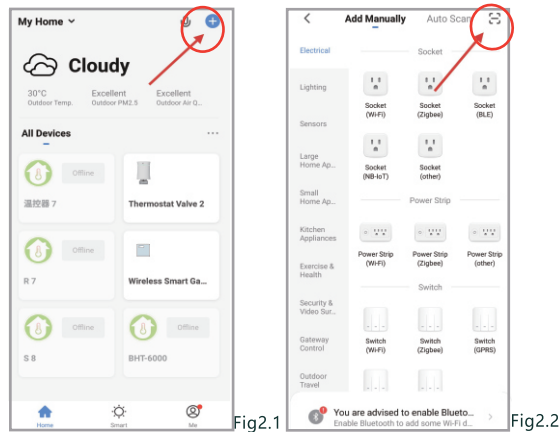
### Step 2. Registration or Log in.

- Download "MOES" Application.
- Enter the Register/Login interface; tap "Register" to create an account by entering your phone number to get verification code and "Set password". Choose "Log in" if you already have a MOES account.

### Step 3. Connect the thermostat

Check the tutorial below to complete the connection and setup.

Method 1: Scan the QR code to configure the network guide (Fig 2.1-Fig 2.3)



Scan this QR code

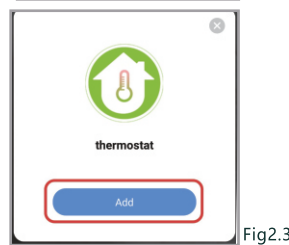


Fig2.3

### Network distribution mode:

#### 1. EZ Mode

When the thermostat is off, press and hold the "∨" until the thermostat screen flashes quickly and displays the "📶" icon, and then operate according to the following figure (Fig 2.4-Fig 2.7).

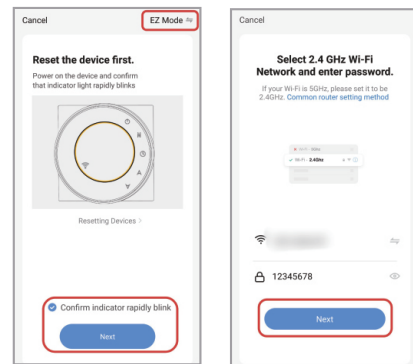


Fig2.4

Fig2.5

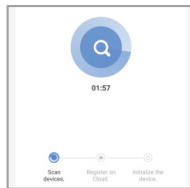


Fig2.6



Fig2.7

#### 2.AP Mode

When the thermostat is off, press and hold the "∨" until the thermostat screen flashes slowly and the "📶" icon appears. (if the "📶" icon appears, continue to press the "∨" until the thermostat screen flashes slowly and displays the "📶" icon), and then operate according to the following figure (Fig 2.8-Fig 2.14)



Fig2.8

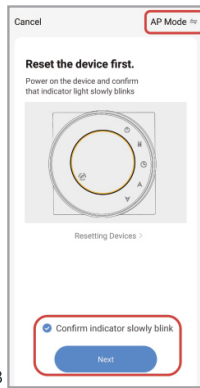


Fig2.9

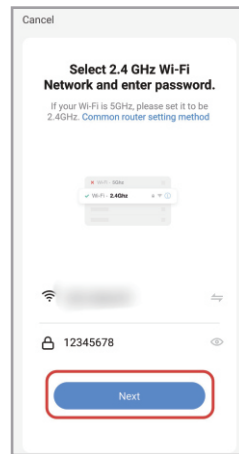


Fig2.10

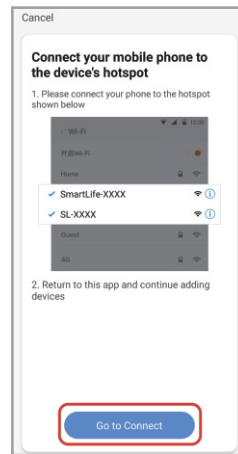


Fig2.11

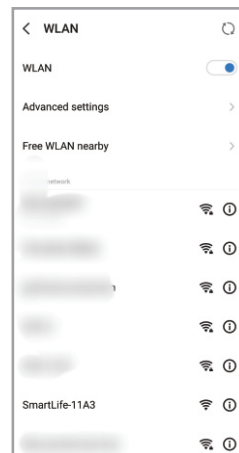


Fig2.12

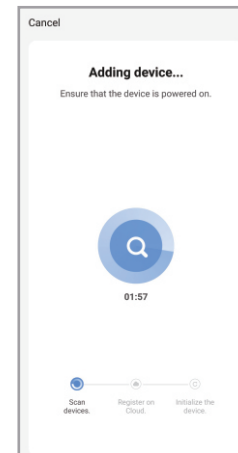


Fig2.13

After connecting to this hotspot, return to the "smartlife" APP

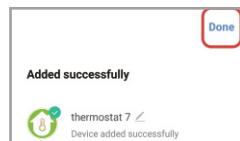
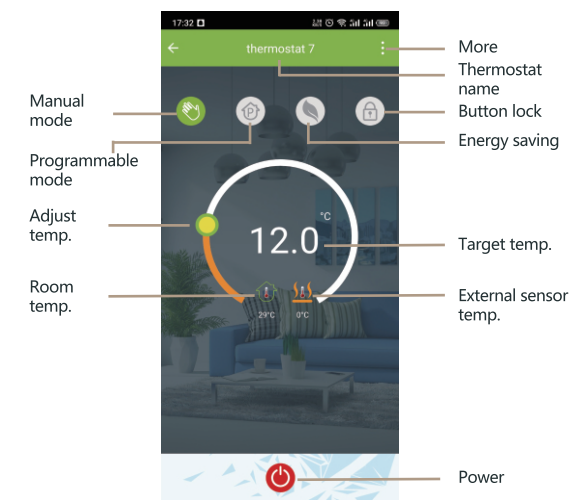
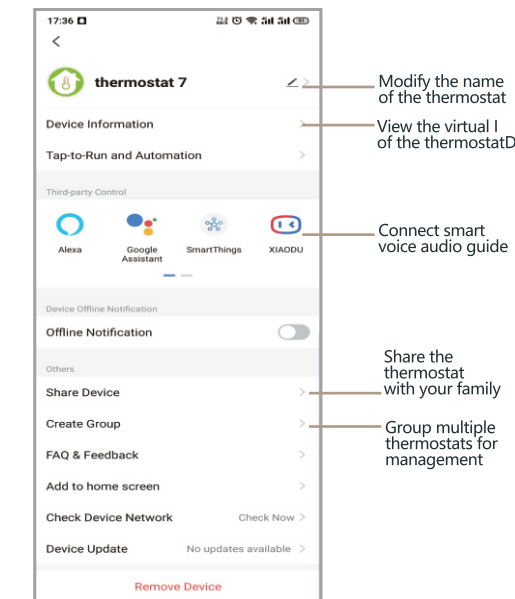


Fig2.14

### APP OPERATION INTERFACE DESCRIPTION (HEATING THERMOSTAT)



### MORE SETTINGS



### SIMPLE EXCEPTION HANDLING

No.	Phenomenons	Handling
1	Power is on but without display.	* Check if the terminals between LCD panel and Power Unit Box is loosen.
2	Without output but display works.	* Use a new LCD panel or new Power Unit Box to replace the old one.
3	Room temp is different from the real temp	* Please follow Item 1 of high senior option to do temperature calibration.

### SERVICE

24-months warranty since date of purchase  
Service beyond the warranty period may need charge.  
More details, please contact us.

Thank you for your support and purchase at we Moes, we are always here for your complete satisfaction, just feel free to share your great shopping experience with us.



If you have any other need, please do not hesitate to contact us first, we will try to meet your demand.

### FOLLOW US

MOES.Official @moessmart @moes\_smart @moes\_smart @moes\_smart www.moes.net

**UK REP** EVATOST CONSULTING LTD  
Address: Suite 11, First Floor, Moy Road Business Centre, Taffs Well, Cardiff, Wales, CF15 7QR  
Tel: +44-292-1680945  
Email: contact@evatmaster.com

**EC REP** AMZLAB GmbH  
Laubenhof 23, 45326 Essen  
Made In China

**Manufacturer:**  
WENZHOU NOVA NEW ENERGY CO.,LTD  
Address: Power Science and Technology Innovation Center, NO.238, Wei 11 Road, Yueqing Economic Development Zone, Yueqing, Zhejiang, China  
Tel: +86-577-57186815  
After-sale Service: service@moeshouse.com