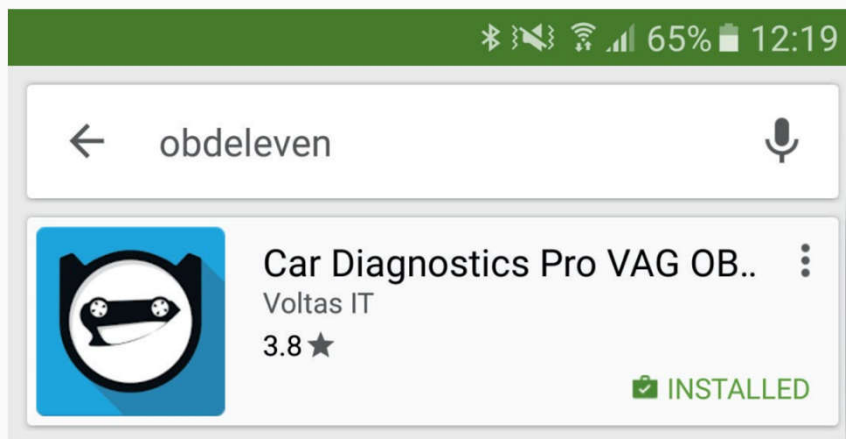


Quick start guide

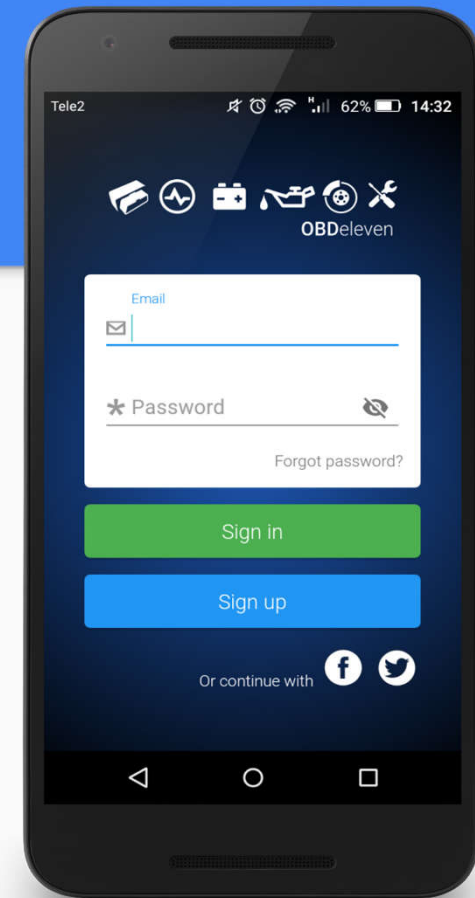
Download & install OBDeleven application

Application can be downloaded from Google Play store [LINK](#)



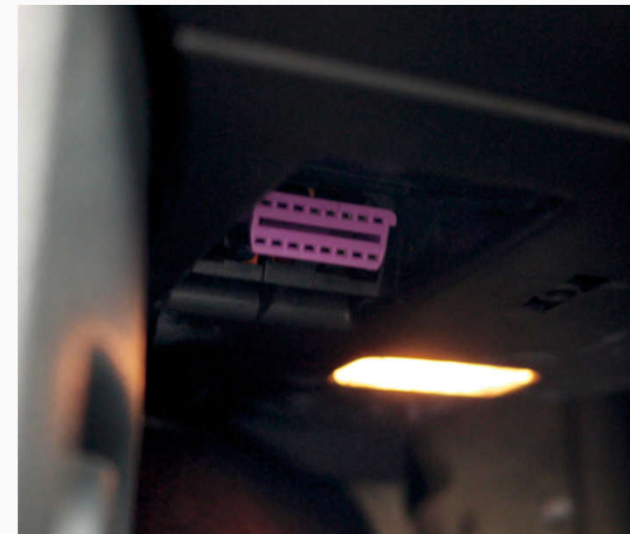
Create account

Connect with Facebook, Twitter or sign up with email by pressing on icons in top of the screen.



Plug device into car OBD2 connector

OBD2 connector is usually found on the driver's side, under the steering wheel.

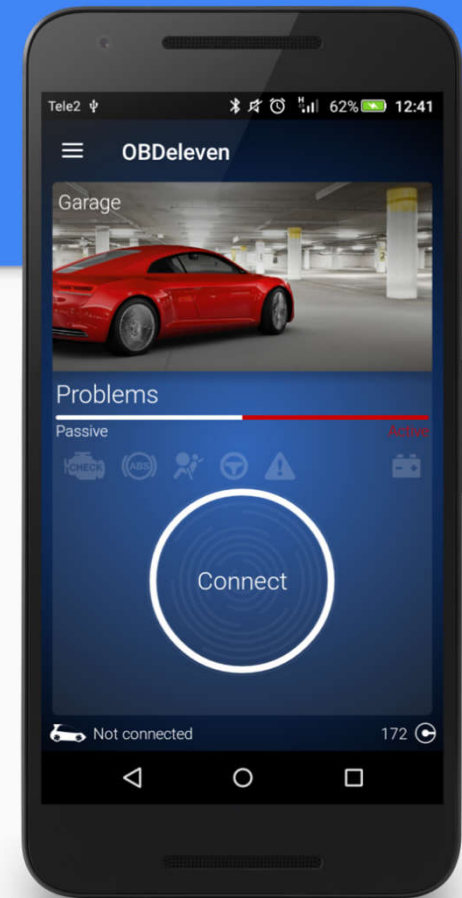


Turn ignition on or start engine



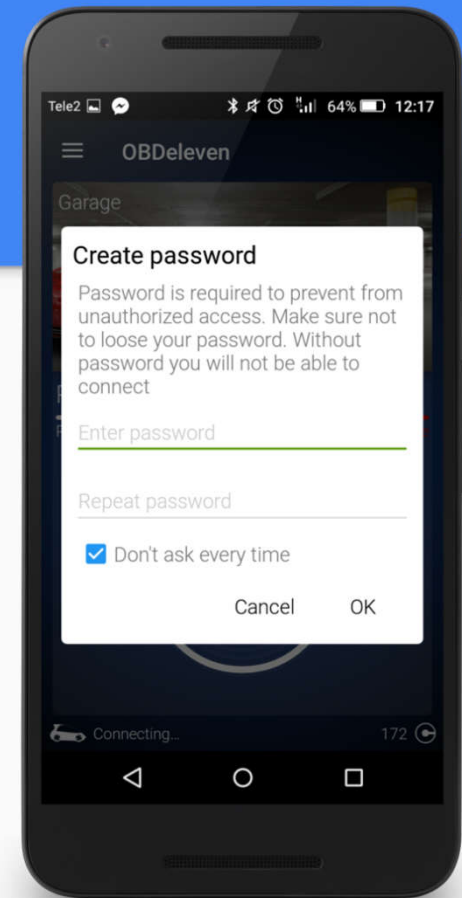
Tap connect

For faster connection pair device via Bluetooth settings.
Pairing code: 1234



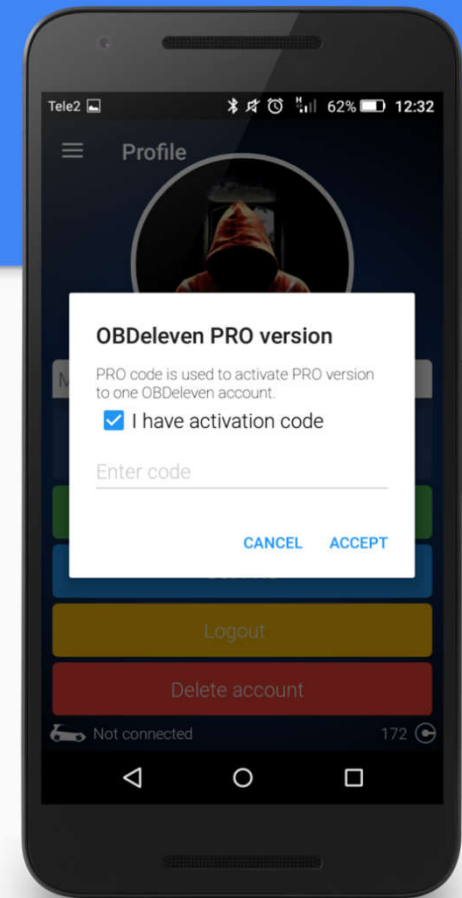
Create device password

Secure your car from unauthorized access by creating device password.



Activate PRO version

If you have PRO version activation code enter it by going to Settings and activating PRO theme.



You are ready to use OBDeleven

More help can be found in our wiki page: [LINK](#)



Created by Voltas IT LLC