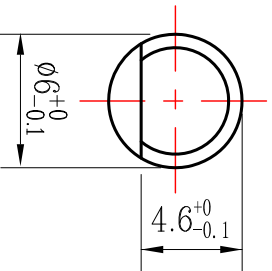
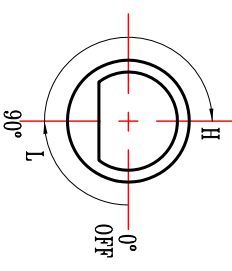


Adjust shaft at HIGH position

SHAFT DETAIL
3:1



DIAL LAYOUT
270°



Operating Temperature		state	location
ON (°C)		---	LOW
OFF (°C)		120±6	(30)
DIFF (°C)		3~8	---

1. The value of operating Temp. is the testing value of surrounding Temp. 25°C. Operating Temp. need to be compensated if the surrounding Temp. higher or lower than 25°C.
 2. The value of operating Temp. is depended on the second measurement.
 3. The value of barometric is 760mmHg.

Rating Voltage(V)	AC
Rating current(A)	250
resistence load current	16A

Contact Style	ARROW INDICATE TEMPERATURE RISING
Contact Resistance	Below 50mΩ
Insulation Voltage	Above DC500V/100MΩ
Insulation Voltage	AC1500V/1min Or AC1800V 1s
Charge	Liquid
Testing condition	(liquid)The change velocity of Temp.<1r/min
Temp. allowed	Main-body:125°C Detector:OFF+30°C
Life run for operation	100,000 circle
The way of installation	No Restriction
Operatating moment	2-5N.cm

MARK NO.	FILE NO.	SIGN	DATE
DESIGN	ZHOULIANWEI		2017.11.02
COLLATE			
AUDITING			
approval			

THERMOSTAT			
DRAWING SIGN	WEIGHT	SCALE	
TOTAL PAGE	A/0	1:1	