



EAN:	4013288031945	Size:	250x205x50 mm
Part number:	05118150001	Weight:	398 g
Article number:	2035/6 A	Country of origin:	CZ
		Customs tariff number:	82054000

- Kraftform Micro screwdriver for slotted and cross-recess screws, Phillips
- Multi-component Kraftform Micro handle for fast and ergonomic screwdriving
- Anti-roll feature and swivel cap for rapid twisting
- The Wera Black Point tip offers an exact fit and optimum corrosion protection
- Take it easy tool finder: colour coding according to profile and size

High quality Wera Micro screwdriver set for precision mechanical work. Rapid twisting is possible by fixing the hand on the twist cap and using the fast-turning zone just below it. This makes time-consuming grip adjustments unnecessary. Power zone with integrated soft zones ensure the transfer of higher tightening and loosening torque. Precision zone for the right angle for adjustment work. The Wera Black Point tip offers high corrosion protection and an exact fit. Includes practical rack for tidy storage of the screwdrivers.

Web link
https://products.wera.de/en/screwdrivers_series_kraftform_micro_2035_6_a.html

Wera - 2035/6 A
 05118150001 - 4013288031945

Wera Werkzeuge GmbH
 Korzter Straße 21-25
 D-42349 Wuppertal
 Tel: +49 (0)2 02 / 40 45-0
 E-Mail: info@wera.de

Series Kraftform Micro

Set contents:



2050 PH Micro

05118020001¹⁾ 1 x PH 00 x 60 mm

05118022001²⁾ 1 x PH 0 x 60 mm

1) Optimised for Asian PH screws

2) Size 0 modified according to JClS 0 (Japanese Camera Industrial Standard)



2035 Micro

05118004001 1 x 0,30 x 1,8 x 60 mm

05118006001 1 x 0,40 x 2 x 60 mm

05118008001 1 x 0,40 x 2,5 x 80 mm

05118010001 1 x 0,50 x 3 x 80 mm

Kraftform Micro Handle



Screwdriving jobs in electrical and precision engineering applications are often tedious and time-consuming. We learned from users what is important for them: working speeds, torque, precision – and we then focused particularly on these issues.



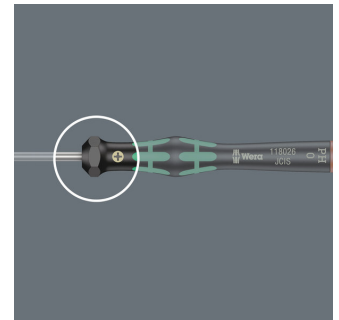
Multi-component screwdriver handle for ergonomic working.

The refined screwdriver for electronics technicians



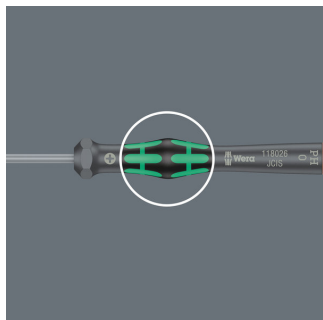
The Kraftform Micro, with its three zones and their specific arrangement, satisfies these requirements perfectly. The free-turning cap that provides support for the hand works with these advantages, enabling quick and easy precision work.

The precision zone



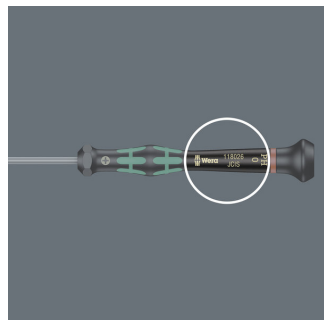
The precision zone directly above the blade gives the user a better feel for the right rotation angle during fine adjustment work.

The power zone



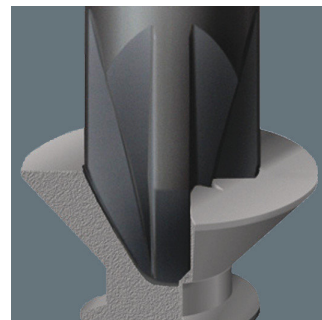
The power zone has integrated soft zones near the blade tip to ensure high torque transfer for loosening or tightening screws without losing contact with the screw.

The fast-turning zone



The fast-turning zone just below the rotating cap allows rapid twisting.

Wera Black Point tip



The Wera Black Point tip and a refined hardening process ensure long service life of the tip, improved corrosion protection and an exact fit.

Applications



Indispensable for many users, including electronics technicians, opticians, precision engineers, jewellers, EDP hardware fitters and model-makers

Web link

https://products.wera.de/en/screwdrivers_series_kraftform_micro_2035_6_a.html

Wera - 2035/6 A

05118150001 - 4013288031945

Wera Werkzeuge GmbH

Korzter Straße 21-25

D-42349 Wuppertal

Tel: +49 (0)2 02 / 40 45-0

E-Mail: info@wera.de

2035/6 A Screwdriver set and rack for electronic applications, 6 pieces

Series Kraftform Micro



Web link

https://products.wera.de/en/screwdrivers_series_kraftform_micro_2035_6_a.html

Wera - 2035/6 A

05118150001 - 4013288031945