

THORGEON

ENERGY METERS



ENERGY METER 01006

MID 3 PHASE 0.25-5(80) A



230/400~ V



PHASE



50



0.25-5(80)



DIN



IP 20



DISPLAY



BATTERY



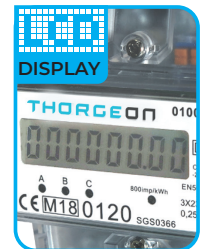
SERIAL

ENERGY METER

MID 3 PHASE 0.25-5(80) A

MODEL No: 01006

- The performance of this meter complies with the following standards:
- IEC 62052-11:2003 Electricity metering equipment (AC) -General Requirements, Tests and Test Conditions-Part 11: Metering equipment
- IEC 62053-21:2003 Electricity metering equipment (AC)-Particular requirements-Part 21: Static meters for active energy(classes 1 and 2)
- EN50470-1:2006 Electricity metering equipment (a.c.)-Part1:General requirements, tests and test conditions-Metering equipment (class indexes A, B and C)
- EN50470-3:2006 Electricity metering equipment(a.c.)-Part3: Particular requirements-Static meters for active energy(class indexes A,B and C).
- The meter is intended for indoor and it has the metering function without any other communications.

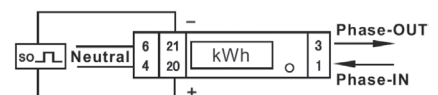


TECHNICAL PARAMETERS

VOLTAGE:	230V/240V
CURRENT:	0,25-5(32)A 0,25-5(45)A 0,25-5(50)A
PULSE FREQUENCY:	12000 IMP/KWH
STARTING CURRENT:	0.004LB
POWER CONSUMPTION:	≤8VA ≤0.4W
ACCURACY CLASS:	1
STANDARD:	IEC 62052-11 IEC 62053-21 EN50470-1/-3
FREQUENCY:	50HZ
IMPULSE CONSTANT:	1000IMP/KWH
IMPULSE CONNECTION VOLTAGE:	12-27V; ≤27MA; MAX LENGHT OF LEAD 20M
IMPULSE WIDTH:	90MS, CONNECT TO TERMINAL 20&21

LIMITS OF VALUES:	MAX 60VDC, MAX 50MA
DISPLAY:	LCD 5+2
PROTECTION CLASS:	IP20
TEMPERATURE RANGE:	-20°~65°C
AVERAGE HUMIDITY VALUE OF YEAR:	75% (NONCONDENSING)

SCHEME



MEASUREMENTS

